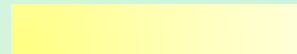


TMaaS CDC Prague

Traffic Management as a Service / 30th May



TMaas



A partnership between City of Ghent and



TMaaS
Traffic Management as a Service

TMaas

Co-Funded by the UIA Initiative



Traffic Management as a Service



create a scalable
and replicable solution

A world map with a network of white lines and dots overlaid on it, representing a global connectivity or mobility network. The map is dark blue, and the network lines are white. The text "manage mobility" is centered over the map.

manage mobility



Challenges Small/Medium Cities

Air quality/congestion

Limited resources



Limited manpower

Diverse range of issues

No need to
invest

In control rooms
In camera's
In screens

Data sources
Overview





City Data



Datex II – III

Json

GTFS

Netex

XML ...

HOW TMAAS WORKS?

CITY CASE GHENT:

MAKE CITIZENS CHOOSE SMARTER BEFORE STARTING THEIR TRIP



1



CONTROL
DASHBOARD

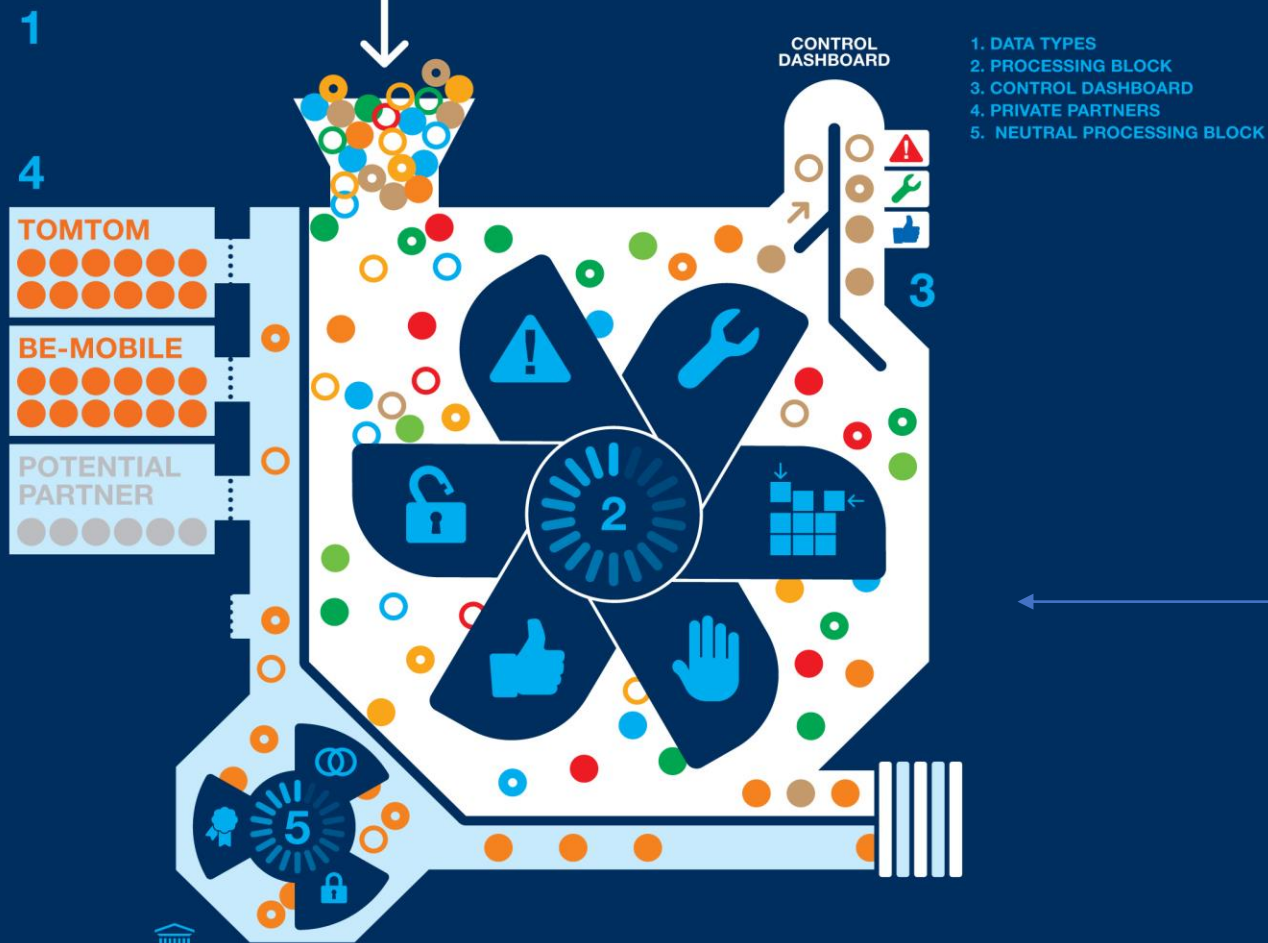
1. DATA TYPES
2. PROCESSING BLOCK
3. CONTROL DASHBOARD

- Clean
- Filter
- Polish
- Normalize
- Transform into EU-standards

HOW TMAAS WORKS?

CITY CASE GHENT:

MAKE CITIZENS CHOOSE SMARTER BEFORE STARTING THEIR TRIP

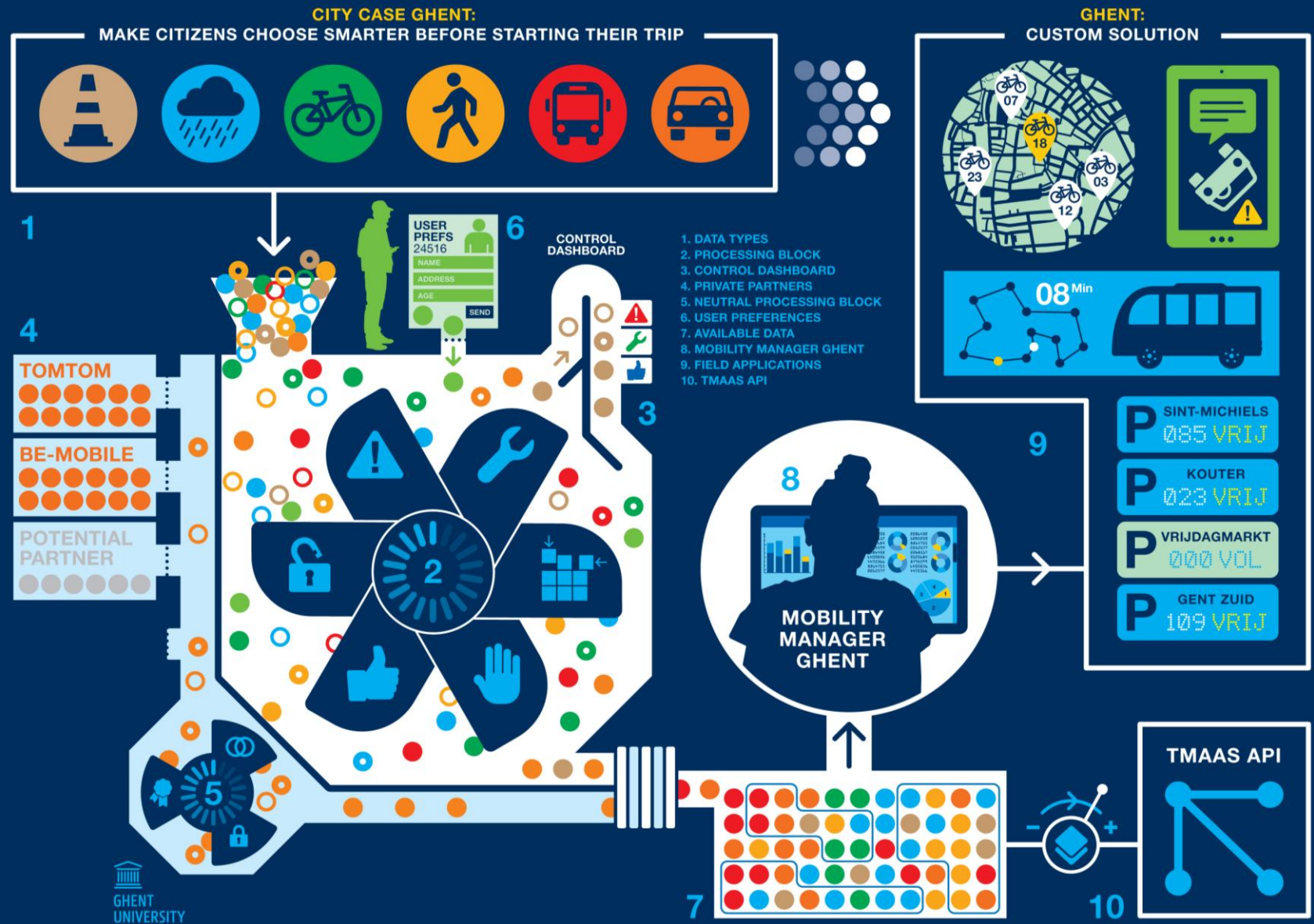


The aggregation engine will merge the data!

BEMOBILE
smart mobility

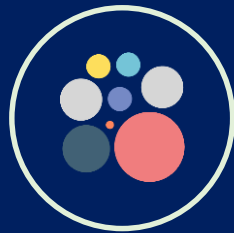
TOMTOM

How TMaas works



TMaaS Innovation

Enabling commercial implementation of TMaaS in a later stage:



Neutral Framework

In which the industry feels comfortable



Smart Data Integration

For both open and commercial data



Strong IP vision from the start

Business insights
Development of TMaaS business model
Market research



TMaaS Features



TMaaS USE CASES (for Ghent)

Warnings on pre-defined routes



Dynamic vehicle positions on a map



Show locations of useful or interesting points on a map



Real-time and historical statistics of KPI's



Immediate insights in real-time traffic events



Asset monitor & Alerting on irregularities



Data editor



2-Way communication



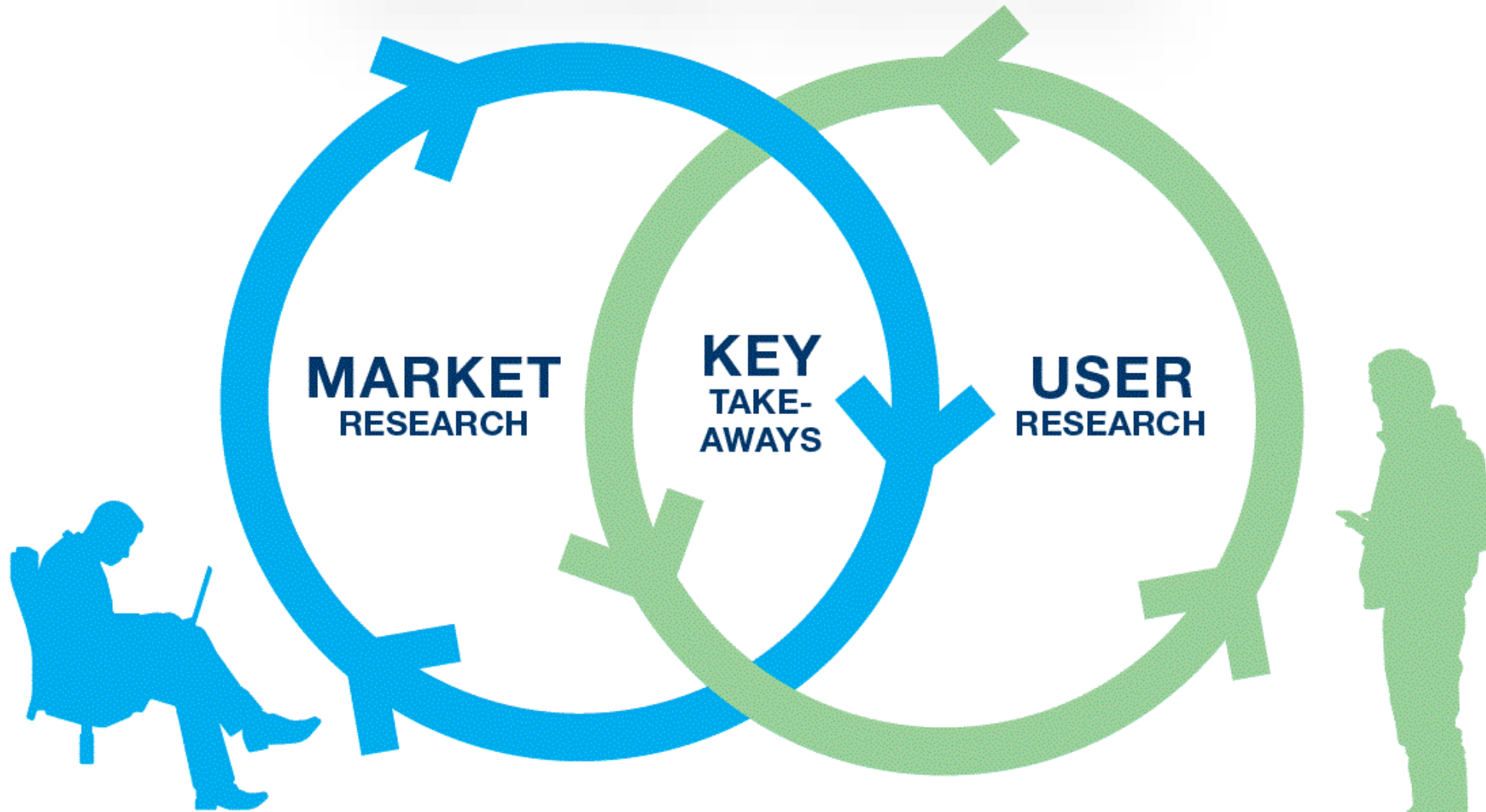
City management panel



Stakeholder involvement: Why?

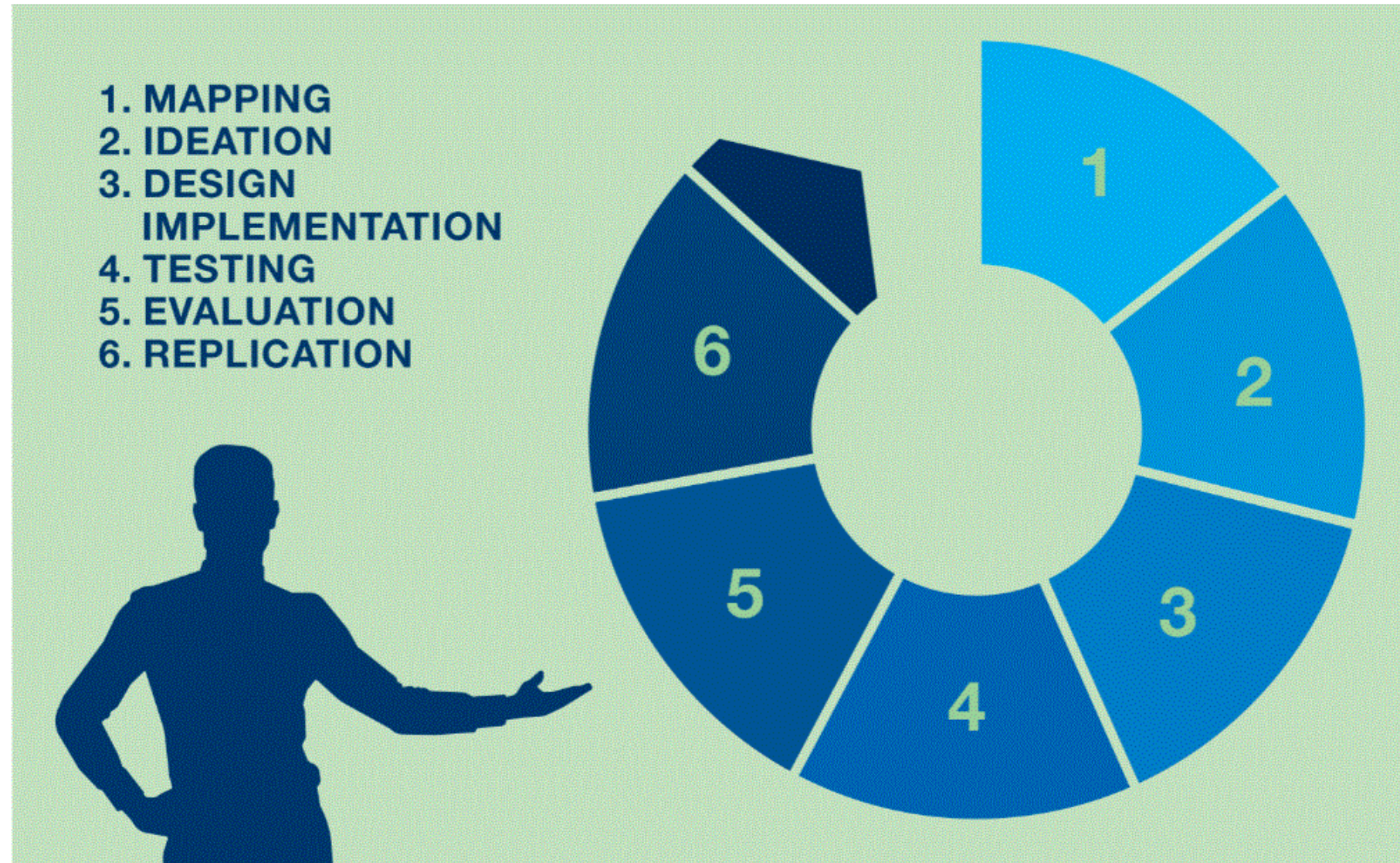


Stakeholder involvement



TMaaS puts the stakeholders at the
Heart of the project ...

Engagement with wider stakeholders



... by involving and consulting them
in every stage of the project.

Stakeholder involvement: How?



“

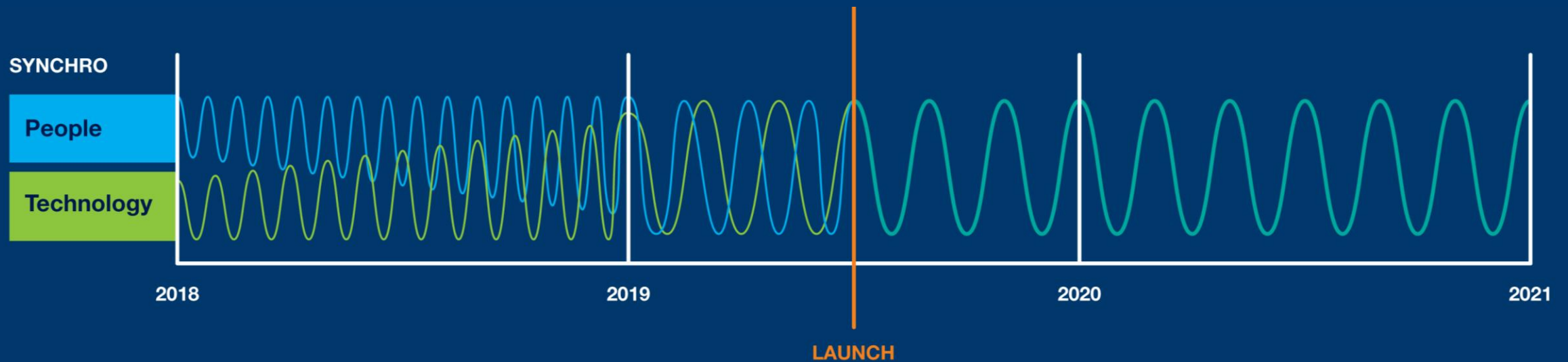
TMAAS IS BUILT
FOR PEOPLE,
WHAT DO YOU
WANT US TO BUILD
FOR YOU?


INTERACT AND MAKE
MORE IMPACT



#MEETTMAAS

Integration of results



A man with short, curly brown hair and a light beard is sitting at a desk in an office. He is wearing a grey textured sweater over a dark blue collared shirt. He is looking intently at a computer monitor. The office environment is visible in the background, including other desks, monitors, and a window with a view of the outdoors. The lighting is soft and blue-toned.

**Send and receive
messages.**

A photograph of a busy public transit station. In the foreground, a man in a light-colored jacket and a white hat with a dark band is looking at his smartphone. To his left, a man in a grey and black striped shirt is also looking at his phone. In the background, a woman in a light pink dress is standing on a set of stairs, and another man in a grey hoodie is looking at his phone. The scene is filled with people, suggesting a crowded transit hub. The text "Personal Automated notifications." is overlaid on the left side of the image.

Personal
Automated
notifications.

Engagement with wider stakeholders

KEY TAKE-AWAYS

DON'T FORGET

- CLEAR COMMUNICATION
- GUIDANCE
- QUALITATIVE RESEARCH

BE AWARE

- TAKES TIME
- EXPECTATIONS
- FEASIBILITY

REMEMBER

- NOT TO JUDGE
- VULNERABLE GROUPS
- GIVE FEEDBACK

Now it is your turn!

- Make small groups (+/-10 people)
- Do a short round the table
- Indicate one moderator
- Use Case Exercise
- Round up



Goals of the exercise

- Choose perspective
 - > 1. Developer
 - > 2. City authority/ Traffic manager
 - > 3. Citizen
- Discuss which 3 use cases you would choose and why
- Problems/solutions?
- From your point of view: are there any interesting use cases missing?

TMaaS USE CASES (for Ghent)

Warnings on pre-defined routes



Dynamic vehicle positions on a map



Show locations of useful or interesting points on a map



Real-time and historical statistics of KPI's



Immediate insights in real-time traffic events



Asset monitor & Alerting on irregularities



Data editor



2-Way communication



City management panel





**Welcome to
the TMaaS
family**

>> Replication



Are you setting up a traffic management centre?

Are you ready to upgrade your traffic management operations?

Want to use existing (local) traffic data sources for monitoring traffic?

Want to be a pioneer?

TMaas Replicator City Programme

How to apply



Go to: tmaas.eu/replicator-city-programme/

Download the Information Brochure

Fill in the questions on our website and apply!

Deadline: 30th June 2019

Thank you!



Contact me

Follow us on Twitter @ tmaas_eu
#TMaaS
Info & Downloads on www.tmaas.eu



TMaaS
Traffic Management as a Service